



# **Compendium of some Mango Varieties found in Odisha**



**Directorate of Horticulture Odisha, Bhubaneswar**

Udyan Bhawan, Nayapalli, Bhubaneswar-751015

Ph.: 0674-2551831, Fax : 0674-2551978

[www.orissanhm.ori.nic.in](http://www.orissanhm.ori.nic.in), E-mail: [udyanhort@sify.com](mailto:udyanhort@sify.com)



**Sri R. L. Jamuda, IAS**

Principal Secretary to Govt.  
Agriculture Department,  
2nd Floor Rajiv Bhawan,  
Odisha Secretariat,  
Bhubaneswar-751001



Tel. No.- 0674-2391325 (O)

Fax No.- 2393948

E-mail- agrsec@ori.nic.in

No. \_\_\_\_\_ / Ag

Date :  
Bhubaneswar

### *Message*

Speciality of mango cultivation in Odisha is very unique due to varietal reasons. A number of varieties are cultivated in various parts of Odisha. The agro-climatic condition of the State is very much conducive for successful cultivation of mango.

A bold step has been by the Directorate of Horticulture in collecting in photographs of different elite varieties of mango including commercial & hybrid, which have found proper place in compendium of Mango varieties found in Odisha. Hope, this compendium will be useful for different stakeholders in indentifying mango varieties. I am thankful to all who are associated in preparation of this compendium.

R. L. Jamuda



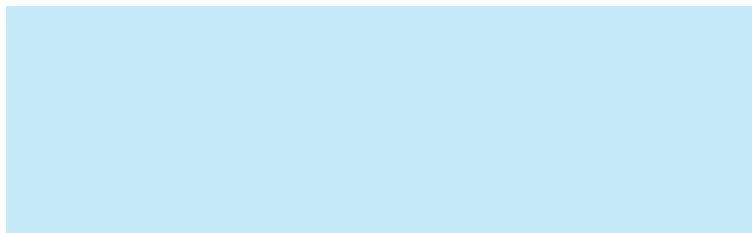
# Preface

Mango (*Mangifera indica*), the King of fruits is grown in India for over 400 years. It is the most delicious fruit and available in various colour, taste, shape and size. It is a part and parcel of life being associated with its all phases right from birth to death. From nutritional point of view it is proved to be rich in vit-A, vit-C, protein, carbohydrate, calcium, phosphorus & Iron. It is grown in almost all the states of India where India shares about 56% of total mango production in the world and more than 1000 mango varieties are available in India.

The soil & climate of Orissa is very much congenial for the cultivation of mango crop. It enjoys the climatic advantage of growing of both North and South Indian varieties successfully. More than 300 mango varieties exist in the State of Orissa.

The booklet “Compendium of Mango varieties” is an effort to document the mango varieties grown in Orissa especially to bring out the local elites into the lime light. There are 18 commercial and 24 hybrid varieties as well as 90 local elites in coloured photographs to help the researchers, Scientists, Students, Farmers and consumers for use in identifying the mango varieties grown in Orissa.

Hope the compendium will be useful for all the stakeholders.

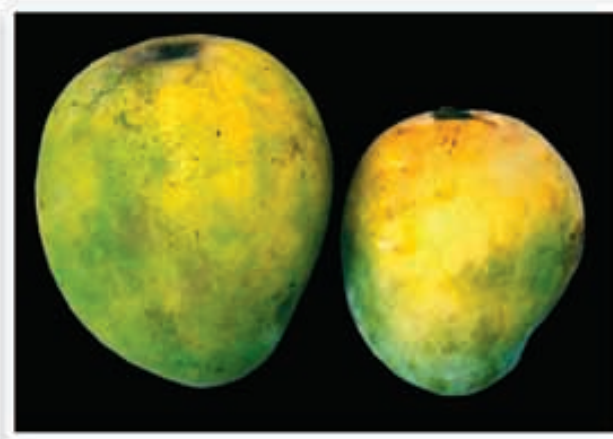




## COMMERCIAL



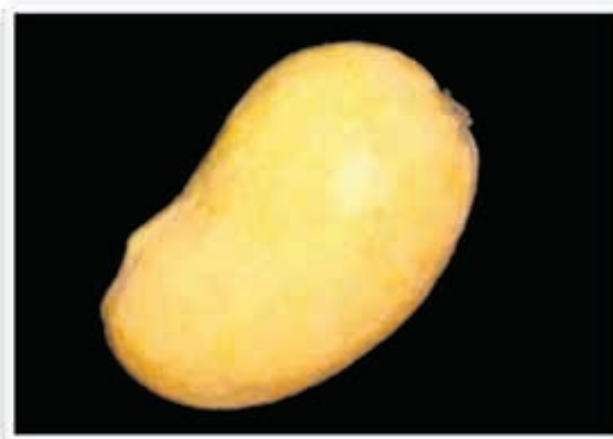
**BANGANAPALLI**



**BOMBAY GREEN**



**CHARATPURI**



**CHAUSA**



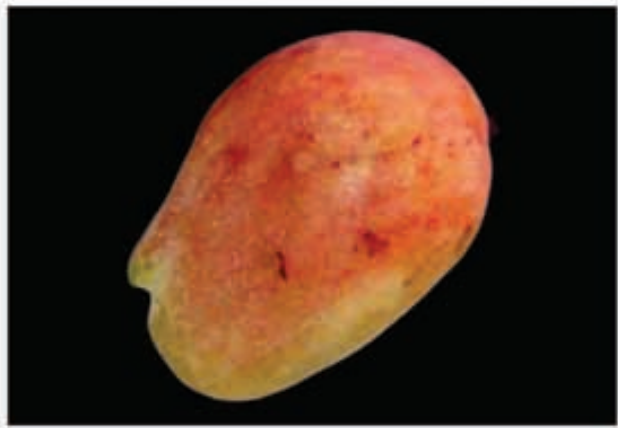
**CHERUKURASAM**



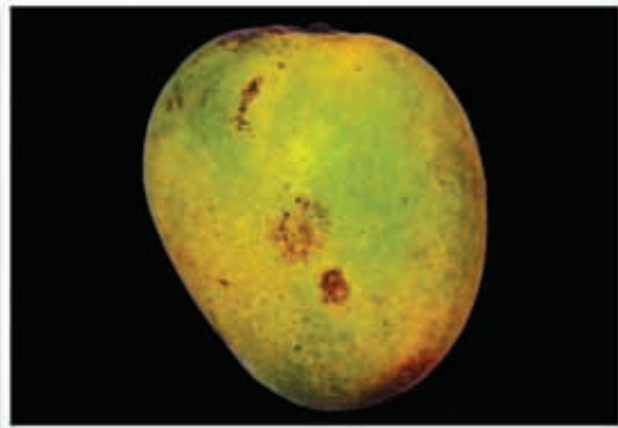
**DASHEHARI**



## COMMERCIAL



GULABKHAS



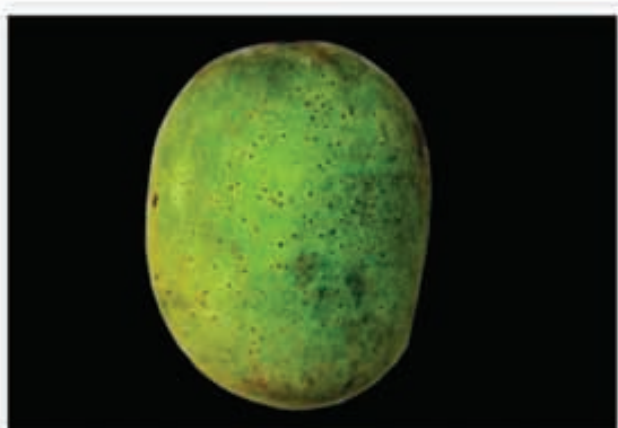
HIMSAGAR



JAHANGIR



KESAR



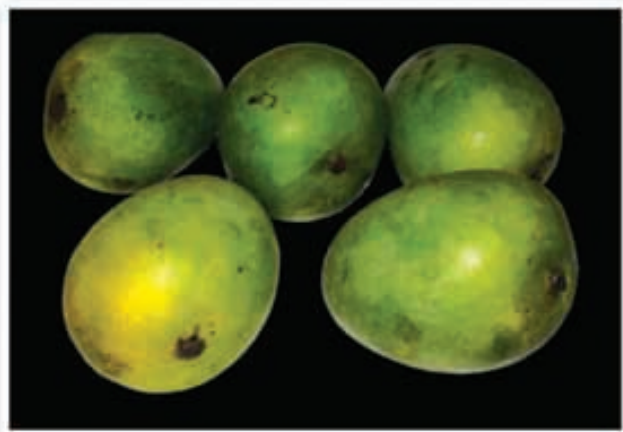
LANGRA



LATSINDURI



## COMMERCIAL



MUHMAD BAHAR



MULGOA



NEELAM



SUMMER BAHIS



SUARNAREKHA



TOTAPURI

## **HYBRID**



**ALFAZLI**



**AMBIKA**



**AMRAPALLI**



**ARKA ANMOL**



**ARKA ARUNA**



**ARKA NEELKIRAN**





## HYBRID



ARKA PUNEET



ARUNIKA



ARUNIMA



AU-RUMANI



MALLIKA



MANJEERA



# **HYBRID**



NEELESCHAN



NEELGOA



NEELKIRAN



NEELPHANSO



PKM-2



PKM-I



## HYBRID



PRAVA SHANKAR



PUSA SURYA



RATNA



SAI SUGANDH



SINDHU



SWARNA JAHINGIR

# LOCAL



SILAPUA



KADALIA



AMRUTA BHANDA



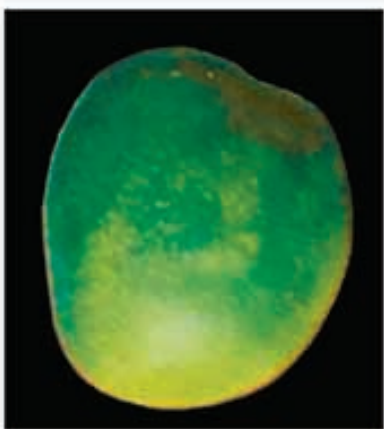
KALABANSI



KAKUDIA



NAKI



MANDA



BHELUA



MITHA

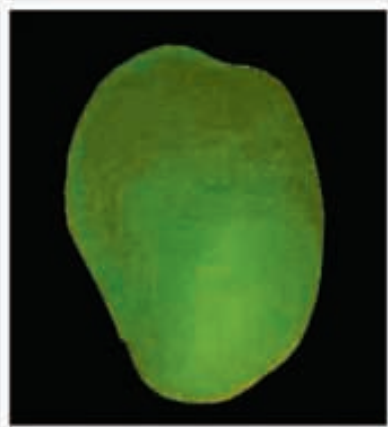




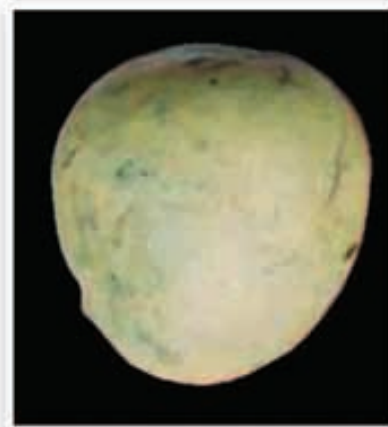
**LOCAL**



**ANANDSAGAR**



**ASADHUA**



**BADA AMBA**



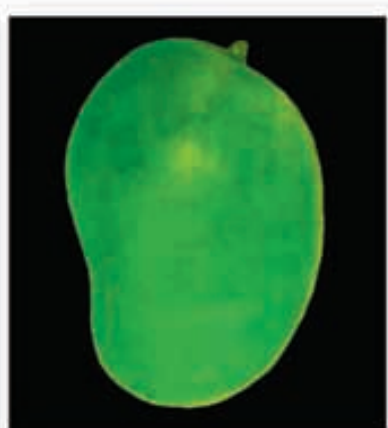
**BADA NAKEI**



**BADA SUNDARI**



**BADAMUNDIA**



**BAHAGACHI**



**BAHAGAJA**



**BALDEV**



# LOCAL



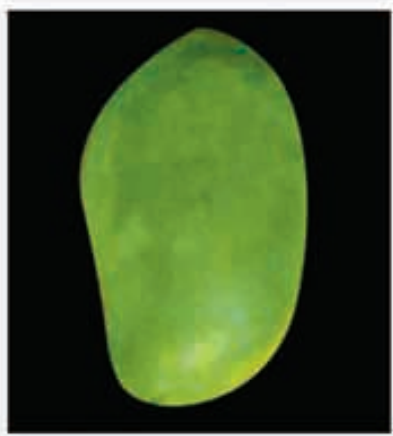
**BANKA MARALI**



**BANKETI GAJA**



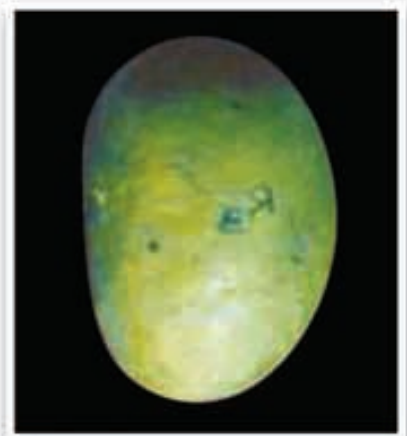
**BARAMASI**



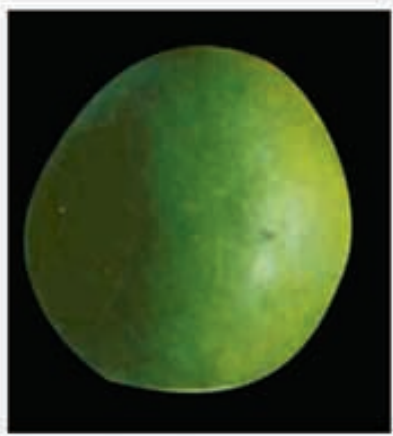
**BATA GACHHA**



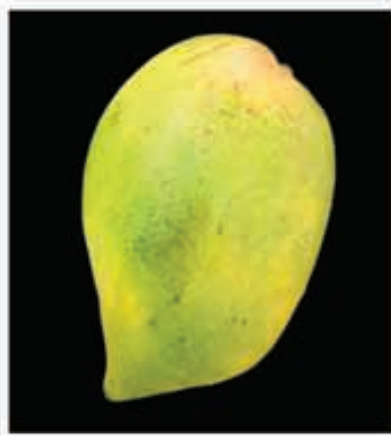
**BAUSUNI**



**BELA**



**BELAGAJA**



**BILEIMUNDI**



**CHADDEI PETA**



**LOCAL**



**CHADRAMA**



**CHAURIMUNDI**



**CHEMPEITI KATA**



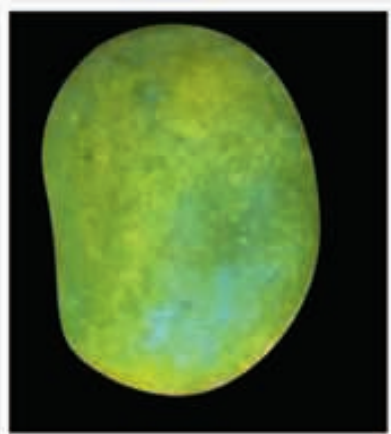
**BANKETI GAJA**



**CHERUA**



**CHINI**



**DAHI AMBA**

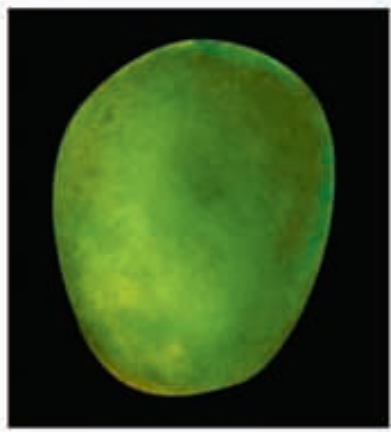


**DAHI PATLI**



**DAYA**

# LOCAL



DESI LANGRA



DOPHALI



GAJA



GAJADAUTA



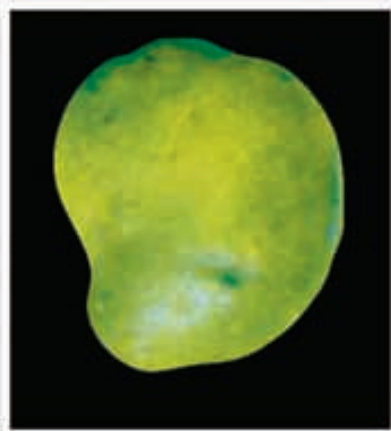
GAJAPAUNSA



GANGA



GOPALO



GOTUMI



GUAMALA



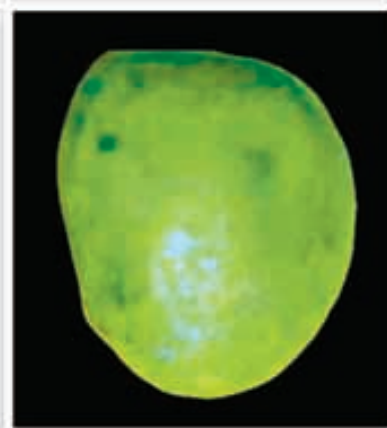
**LOCAL**



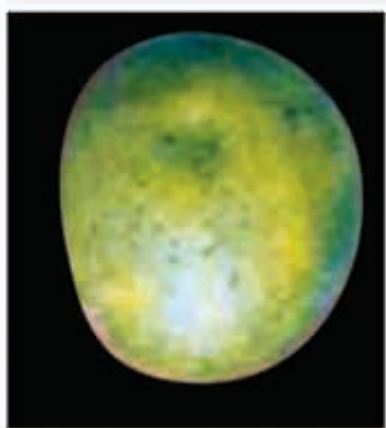
**GULAB BASA**



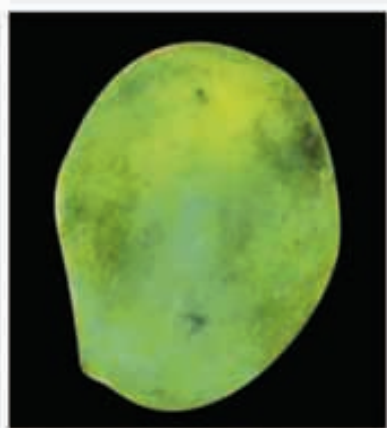
**GULABU AMBA**



**GURUDI**



**GURVELLI**



**HATIDANTHA**



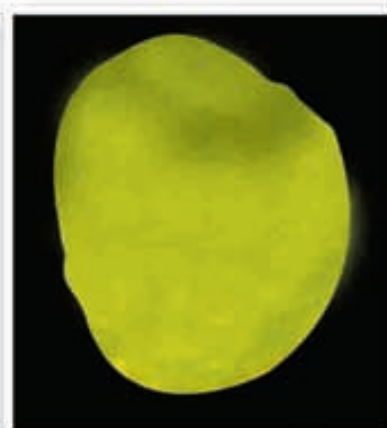
**HATIMUNDIA**



**HUNKA MULIA**



**HUNKAGAJA**



**JAHANGIR**



# LOCAL



JAMUNA



KADALI AMBA



KAHNEI



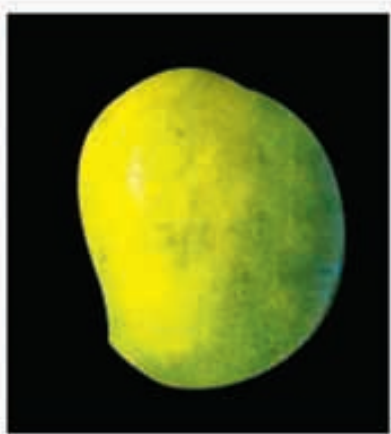
KAI



KALAPAHARA



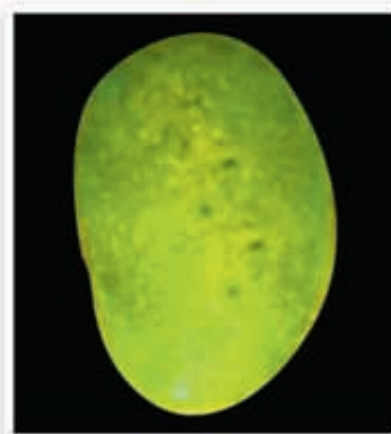
KALI



KALI AMBA



KALIA



KALIA GAJA



**LOCAL**



**KALMI**



**KANCHA MITHA**



**KANCHA SWADI**



**KARATA BADA**



**KARPURA BASA**



**KHAJARA**



**KOLIBOMAI**



**KRUPANA**



**KUANRI**

# LOCAL



KUMUDA



LAMBUDI



LANGRA



LAT SUNDARIA



LEMBU GAJA



LONGAL KANTIA



MAHUA



MAKAR MUNDIA



MANA GAJA



**LOCAL**



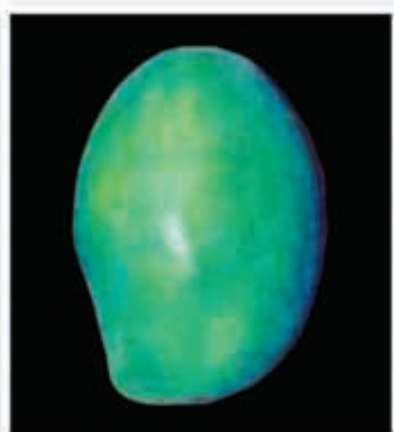
MANDA



MANISANAKI



MATI KHANIA



MENDHA MUNDA



MISKANTA



NABATPANA



NAKEI



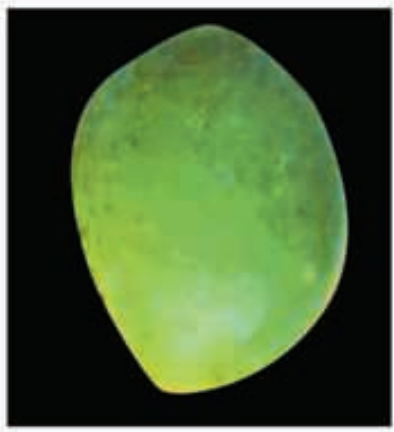
NAKI



NAKOI



# LOCAL



NAKUA



NANGALAKANTI



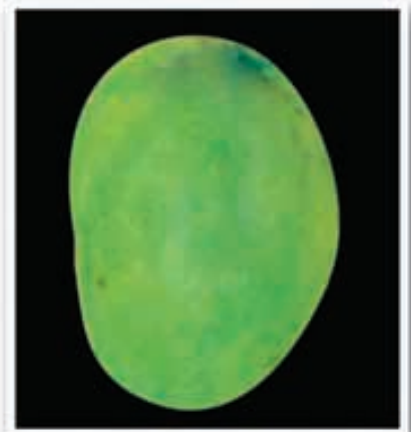
NANGALAMUNDA



NEENUM



PANA



PAUNSIA



PENTHI



PREMSAGAR



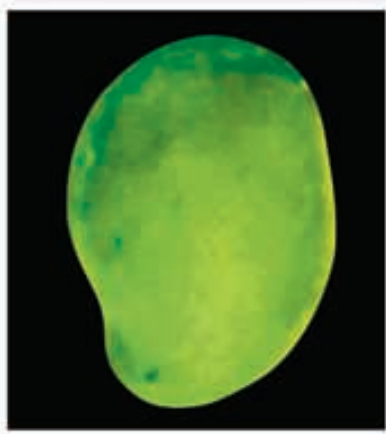
RASABALI



**LOCAL**



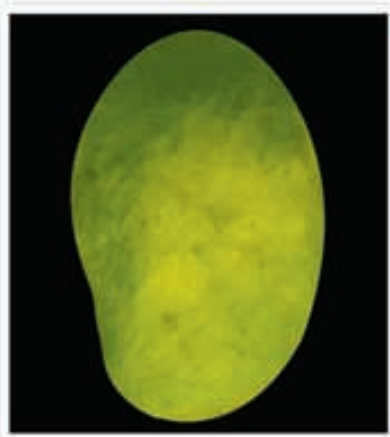
**SALITA**



**SATYABATI**



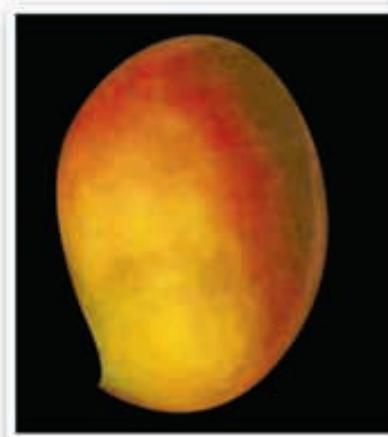
**SINDURI**



**SUADIA**



**SUANAKI**



**SUNDARI**



**TAPA GAJA**



**TINI GACHHIA**



**TOTAMUNDIA**